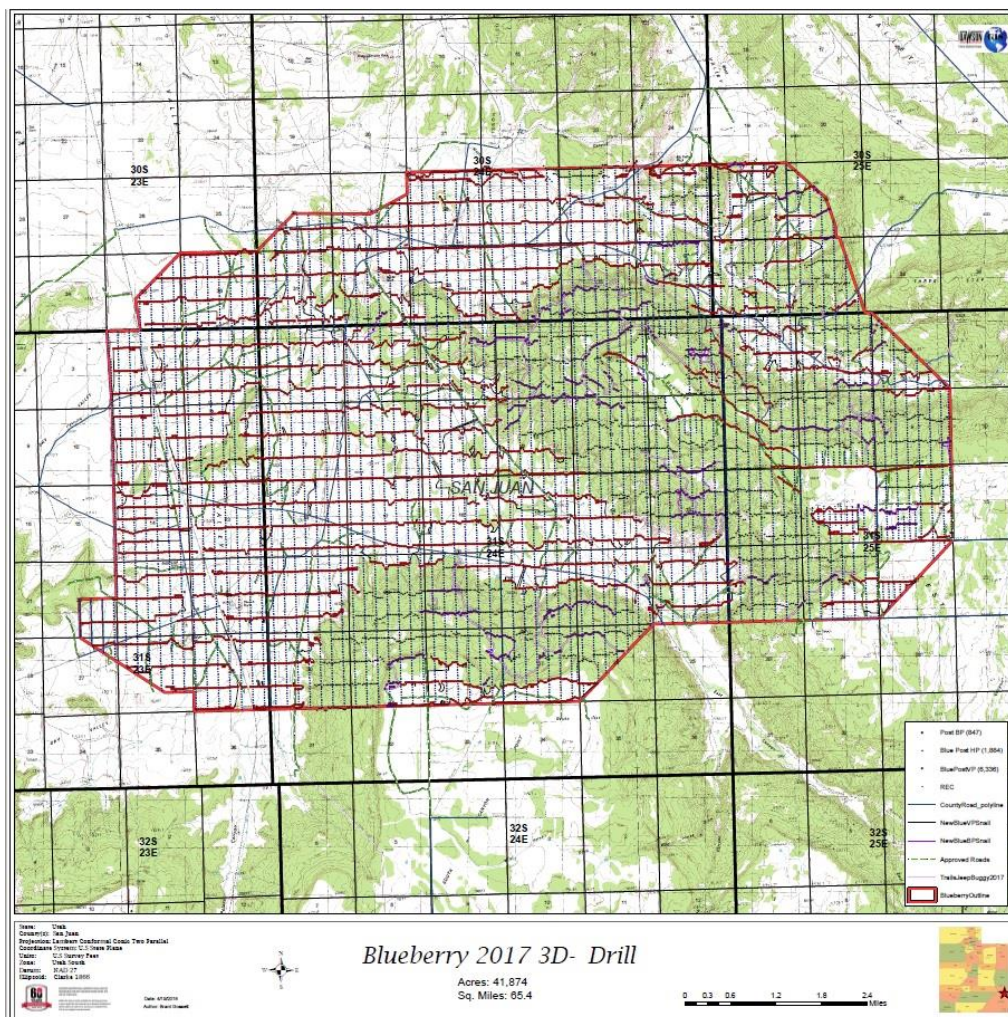




MGX Minerals Completes Paleontology Survey at Paradox Basin, Utah Petrolithium Project; Archaeological Study Nearing Completion

VANCOUVER, BRITISH COLUMBIA / April 23, 2018 / MGX Minerals Inc. (“MGX” or the “Company”) (CSE: XMG / FKT: 1MG / OTC: MGXMF) is pleased to provide an update on the Company’s Paradox Basin Petrolithium Project (the “Project”). The Project includes the 80,380-acre Blueberry Unit, a recently unitized Federal Oil and Gas Unit created as part of the Project.

After approximately two months of fieldwork crews have completed Paleontology Surveying and are nearing completion of the Archeological Survey. To date all locations have been surveyed out with a total of 163 new sites located along with 12 sites that need redocumenting. Documentation recording for the survey will begin this week and take approximately one week to complete. Pending Bureau of Land Management approval, a Seismic Survey at the Paradox Project is scheduled to commence in early August.



The 110,000 acre Paradox Project represents the first large scale integrated petroleum and lithium exploration project in the United States and is located proximate to the Lisbon Valley oilfield within the Paradox Basin, which has shown historical brine content as high as 730 ppm lithium (Superior Oil 88-21P).

The Project is being simultaneously explored for oil, gas, lithium and other brine minerals as part of the Company's North and South American exploration, testing and analyses strategy to determine locations for deployment of the Company's lithium and mineral extraction technology inclusive of Petrolithium, geothermal, and other lithium brine feedstock sources. MGX controls over two million acres of lithium mineral claims throughout North America.

Blueberry Unit

MGX is currently earning a 75% working interest in the Project, with the remaining interest primarily controlled by a private Utah corporation (the "Paradox Partner"). The Paradox Partner has been engaged by MGX as subcontracted operator of the Project. The Project is host to National Instrument (N.I) 51-101 estimated prospective resources (the "Estimate") consisting of leasehold and royalty interests in San Juan County, Utah and Miguel County, Colorado. The estimate was prepared by the Ryder Scott Company, L.P. ("Ryder Scott"), an independent qualified reserves evaluator within the meaning of N.I. 51-101 - Standards of Disclosure for Oil and Gas Activities ("NI 51-101"), with an effective date of June 30, 2017. The Estimate was prepared in accordance with N.I. 51-101 and the Canadian Oil and Gas Evaluation.

Estimated Gross Volumes
Unrisked Prospective (Recoverable) Hydrocarbon Resources
Leasehold Interest in San Juan County, Utah and San Miguel County, Colorado of
MGX MINERALS INC.
As of June 30,2017

Formation	ULTIMATE RECOVERY OIL – MMBO			ULTIMATE RECOVERY GAS – BCF			COC*
	LOW	BEST	HIGH	LOW	BEST	HIGH	
Paradox Clastics							
CB2	41.799	59.498	85.324	33.441	47.602	68.266	0.075
CB3	41.915	60.641	85.833	33.536	48.517	68.671	0.075
CB4	12.766	18.745	26.692	10.213	14.781	21.355	0.075
CB5	33.185	48.065	68.841	26.548	38.453	55.074	0.075
CB6	6.603	9.607	13.874	5.283	7.686	11.100	0.045
CB7	1.892	2.735	3.948	1.514	2.188	3.158	0.032
CB8	19.108	27.525	39.079	15.287	22.022	31.264	0.068

CB9	11.452	16.671	23.711	9.162	13.337	18.970	0.068
CB10	14.565	21.169	30.088	11.652	16.936	24.073	0.068
CB11	2.021	2.929	4.244	1.617	2.344	3.396	0.032
CB12	9.352	13.609	19.525	7.482	10.887	15.620	0.045
CB13	9.333	13.158	19.297	7.468	10.815	15.438	0.045
CB14	3.195	4.621	6.634	2.556	3.697	5.308	0.045
CB15	6.455	9.432	13.633	5.164	7.546	10.908	0.045
CB16	2.752	3.987	5.768	2.202	3.190	4.615	0.045
CB17	3.770	5.390	7.835	3.016	4.313	6.269	0.040
CB18	4.673	6.728	9.572	3.739	5.383	7.658	0.045
CB19	16.690	24.226	34.542	13.358	19.381	27.636	0.068
CB20	2.931	4.253	6.118	2.435	3.402	4.895	0.040
CB21 (Cane Creek)	35.336	51.338	73.971	28.272	41.073	59.177	0.097
CB22	5.635	8.261	11.957	4.508	6.609	9.566	0.045
Leadville	1.000	2.100	4.000	153.000	231.700	341.600	0.066

*COC – Chance of Commerciality = Chance of Discovery * Chance of Development

Lisbon Valley and Paradox Basin Geology

The Project is proximate to Lisbon Valley oilfield which has approximately 140 wells. According to production statistics, as reported by the Utah Department of Natural Resources, Oil, Gas and Mining Division, cumulative lifetime production within the Lisbon Valley oilfield has totaled 51.4 million barrels of oil as of June 2017 (“Oil Production by Field, Utah Department of Natural Resources, Division of Oil, Gas and Mining”; June 2017; [Click Here](#)). The Paradox Basin has been noted by the USGS as having one of the largest undeveloped oil and gas fields in the United States (“Assessment of Oil and Gas Resources in the Paradox Basin Province...”; USGS; 2011; [Click Here](#)).

About MGX Minerals

MGX Minerals is a diversified Canadian resource company with interests in advanced material and energy assets throughout North America. Learn more at www.mgxminerals.com.

Contact Information

Jared Lazerson

President and CEO

Telephone: 1.604.681.7735

Web: www.mgxminerals.com

Neither the Canadian Securities Exchange nor its Regulation Services Provider (as that term is defined in the policies of the Canadian Securities Exchange) accepts responsibility for the adequacy or accuracy of this release.

Forward-Looking Statements

This press release contains forward-looking information or forward-looking statements (collectively "forward-looking information") within the meaning of applicable securities laws. Forward-looking information is typically identified by words such as: "believe", "expect", "anticipate", "intend", "estimate", "potentially" and similar expressions, or are those, which, by their nature, refer to future events. The Company cautions investors that any forward-looking information provided by the Company is not a guarantee of future results or performance, and that actual results may differ materially from those in forward-looking information as a result of various factors. The reader is referred to the Company's public filings for a more complete discussion of such risk factors and their potential effects which may be accessed through the Company's profile on SEDAR at www.sedar.com.